

The Freedom to Grow[®]



MANUFACTURING

AddonSoftware has developed practical, affordable, feature-rich, and easy-to-use enterprise-wide software applications for businesses for more than 25 years.

Companies using AddonSoftware enjoy *The Freedom to Grow*[®] because of its lean efficiency, its scalability, ease of customization, and its ability to facilitate the preservation of existing customizations through the upgrade cycle.

Modern

- **Productive**
- **Extensible**
- **Flexible**
- **Trusted**

+1 (706) 770-6777
info@mrssoftwaresolutions.com
mrssoftwaresolutions.com

MR Software Solutions

MANUFACTURING FEATURES

AddonSoftware's Manufacturing bundle provides an ideal solution for any type of manufacturing environment - make-to-stock, make-to-order, or mixed mode - providing accurate tracking of work in process, streamlined scheduling, and excellent tracking of manufacturing costs. The manufacturing bundle includes Bill of Materials and Shop Floor Control with scheduling along with the complete Accounting and Distribution bundles. The Manufacturing bundle provides for multiple warehouses with costs, prices, buying, replenishment, and item history by warehouse. It includes complete lot/serial number tracking throughout the manufacturing and distribution process and the output of reports, sales invoices, customer statements, vendor POs, etc., via e-mail or fax, or output in HTML or Adobe® PDF format at any time.

The **Shop Floor Control** module uses work orders to collect, store, track, and report the costs of material, labor, overhead, and outside purchases relating to the manufacture of an item or batch of items. The module is fully integrated and information automatically flows into other application modules including Bill of Materials, Inventory Control, and Purchase and Sales Order Processing. Work order history is preserved indefinitely by manufactured part number and transaction.

Multi-warehouse capable

Serial/lot inventory

Planned and quoted Work Order entry

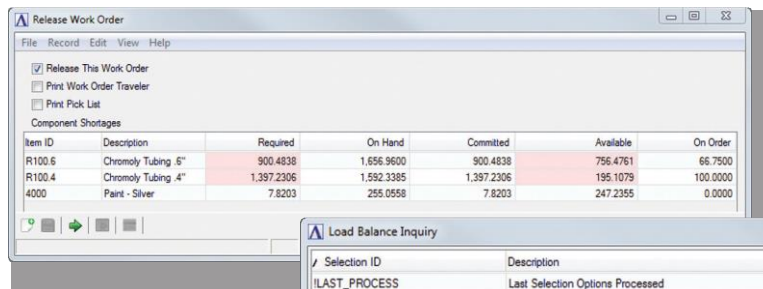
Built-in email/fax output

Graphical planning and scheduling calendars

Bottleneck Analysis Report

Labor Efficiency Report

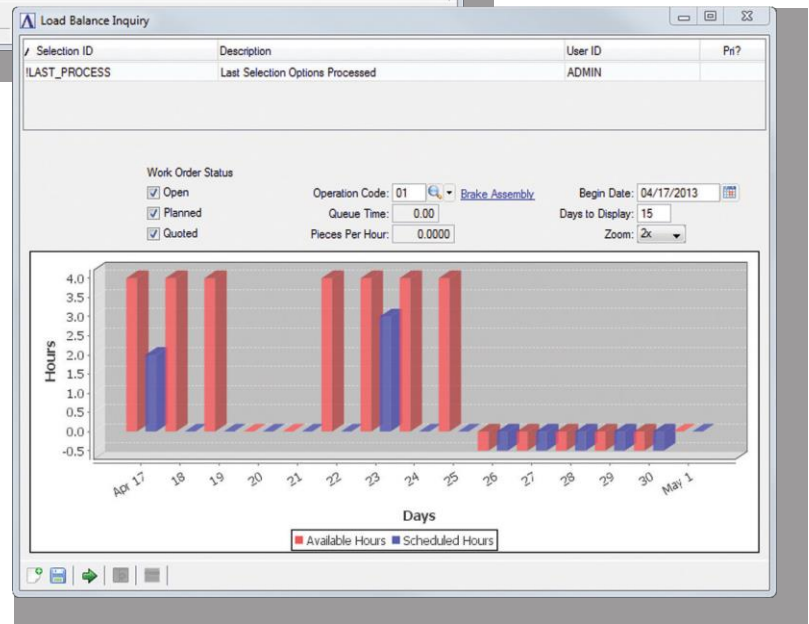
Committed Materials Report



Release Work Order

Item ID	Description	Required	On Hand	Committed	Available	On Order
R100.6	Chromoly Tubing, 6"	900.4838	1,656.9600	900.4838	756.4761	66.7500
R100.4	Chromoly Tubing, 4"	1,397.2306	1,592.3385	1,397.2306	195.1079	100.0000
4000	Paint - Silver	7.8203	255.0558	7.8203	247.2355	0.0000

Release Work Order function incorporates a grid that highlights any shortages



Load Balance Inquiry presents real-time filtering and graphical charting

The **Bill of Materials** application provides unlimited levels of material usage and has features that easily define and track material, labor, subcontract, and overhead costs. Manufacturing cost accuracy is one of the system's primary strengths. Built-in flexibility allows you to define your materials in any unit of measure, and adjust factors for scrap and yield making accurate material requirements.

The choice is yours!